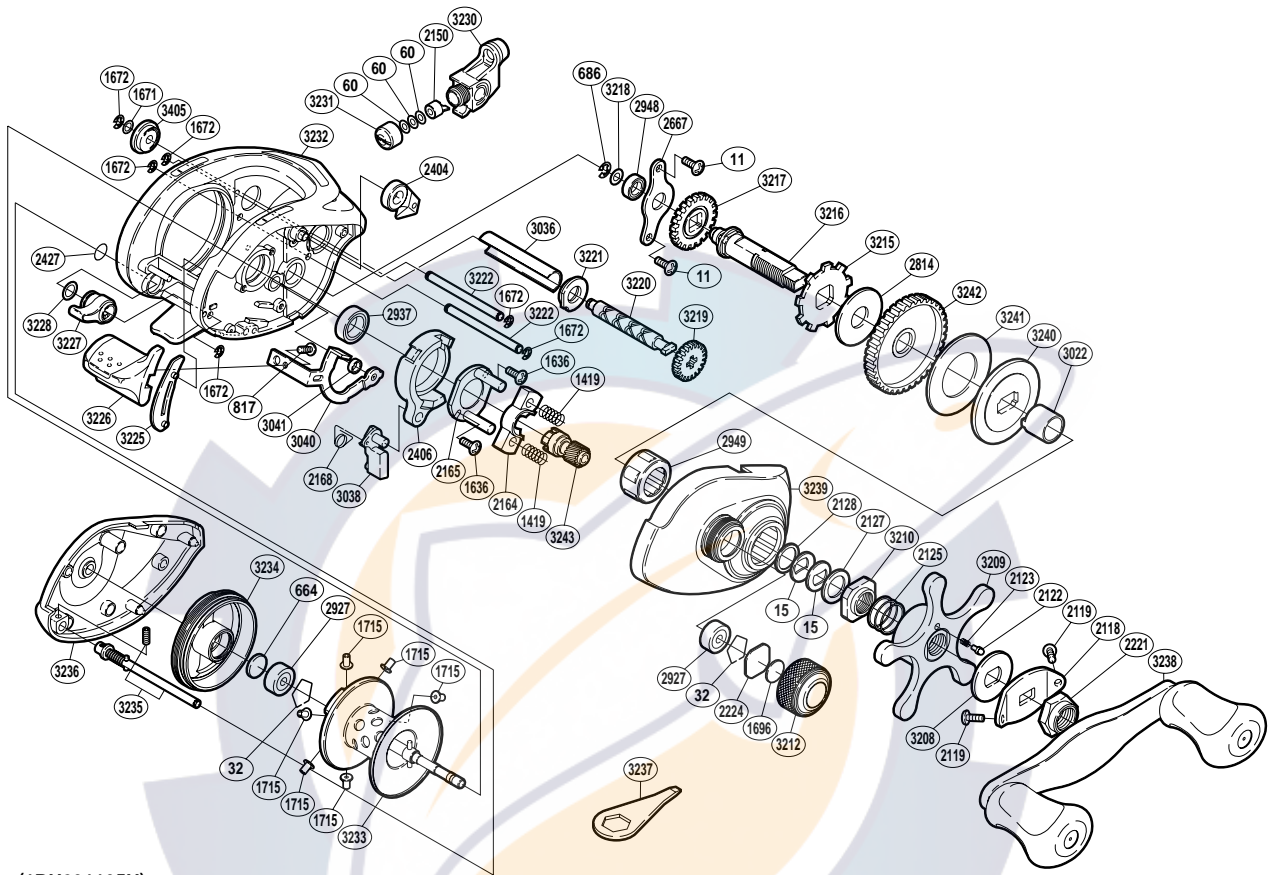


SHIMANO®

CHRONARCH

CH-100BPV



(1RH291105U)

| Part No. | Description | Part No. | Description | Part No. | Description |
|----------|-----------------------|----------|----------------------------|----------|--------------------------|
| BNT0011 | Screw | BNT2221 | Handle Nut | BNT3218 | Washer |
| BNT0015 | Drag Spring Washer | BNT2224 | Spool Tension Spacer A | BNT3219 | Idle Gear C |
| BNT0032 | Bearing Retainer | BNT2404 | Anti-Reverse Pawl | BNT3220 | Worm Shaft |
| BNT0060 | Spacer | BNT2406 | Clutch Cam | BNT3221 | Worm Bushing A |
| BNT0664 | Spacer B | BNT2427 | O Ring | BNT3222 | Level Wind Guide |
| BNT0686 | E Lock | BNT2667 | Drive Shaft Retainer | BNT3225 | Clutch Bar Guide B |
| BNT0817 | Screw | BNT2814 | Drag Washer A | BNT3226 | Quick-Fire II Clutch Bar |
| BNT1419 | Yoke Spring | BNT2927 | Ball Bearing | BNT3227 | Side Plate Cam Lever |
| BNT1636 | Screw | BNT2937 | Ball Bearing | BNT3228 | Washer |
| BNT1671 | Washer | BNT2948 | Ball Bearing | BNT3230 | Line Guide |
| BNT1672 | E Lock | BNT2949 | Roller Clutch Bearing | BNT3231 | Pawl Cap |
| BNT1696 | Cast Control Spacer B | BNT3022 | Roller Clutch Inner Tube | BNT3232 | One-Piece Frame |
| BNT1715 | Brake Collar (red) | BNT3036 | Level Wind Guard | BNT3233 | Spool Assembly |
| BNT2118 | Handle Nut Plate | BNT3038 | Clutch Pawl | BNT3234 | Brake Case |
| BNT2119 | Screw | BNT3040 | Clutch Plate | BNT3235 | Side Plate Shaft |
| BNT2122 | Click Pin | BNT3041 | Clutch Plate Shaft Support | BNT3236 | Left Side Plate |
| BNT2123 | Click Spring | BNT3045 | Worm Bushing B | BNT3238 | Handle Assembly |
| BNT2125 | Star Drag Spring | BNT3208 | Star Drag Click Plate | BNT3239 | Right Side Plate |
| BNT2127 | Star Drag Spacer | BNT3209 | Star Drag | BNT3240 | Key Washer |
| BNT2128 | Bearing Washer | BNT3210 | Star Drag Nut | BNT3241 | Drag Washer C |
| BNT2150 | Line Guide Pawl | BNT3212 | Cast Control Cap | BNT3242 | Drive Gear |
| BNT2164 | Yoke | BNT3215 | Anti-Reverse Ratchet | BNT3243 | Pinion Gear |
| BNT2165 | Clutch Cam Retainer | BNT3216 | Drive Shaft | | |
| BNT2168 | Clutch Pawl Spring | BNT3217 | Idle Gear A | BNT3237 | Wrench (accessory) |